

VM Connect

► Overview

VM Connect (Voice Mail Connect) is a productivity tool that provides:

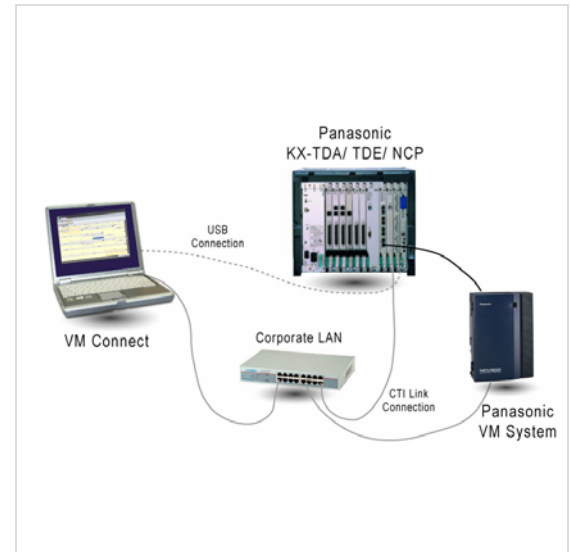
- External notifications of voice messages for various people based on a predefined timetable
- Direct call forwarding or single mailbox to retrieve voice messages
- Three cascade number scheme for forwarding notifications

► Key Features

- Easily create clean and professional-looking schedules in less time
- Keep track of time-off requests and ensure shift coverage by smoothly adding information to schedule
- Make changes quickly and effectively
- On-screen calendar to set the telephone numbers to call when not available
- Enhanced integrated calendar views: Day, Work Week, Week, Month, and Timeline
- Easy visibility and management to complex call coverage schedules
- Drag and drop support for schedules
- Organize various schedules by sequential grouping within the same day
- Custom time period for the forward availability and flexible recurrences
- Six skin styles available for you to choose from
- Panasonic equipment already in place

► Target Customers

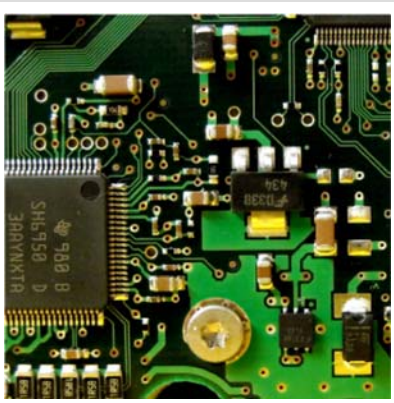
- Key persons involved in creating work schedules for staff in a company
- Any organization that still depends on someone to hand write staff work schedules



Benefits

- Enhanced ease of use and quick learning
- Time savings by cutting substantial time administrating the call schedule process
- Improve staff satisfaction by avoiding miscommunication
- Reduce overtime expenses
- Augment customer relations' activities by not missing any call
- More control by avoiding overload and better utilizing work resources

System Requirements



- KX-TDA 30/50/100/200/600, KX-TDE 100/200/600, KX-NCP 500/1000, with USB or TCP/IP connection to CCServer Host
- Panasonic VoiceMail KX-TVA 50/200
- VM Connect Host (minimum) – P4 1 GHz, 256 MB RAM, 1 GB free disk space
- Operating Systems:
 - Microsoft Windows 2000 Professional (SP 4 or later)
 - Microsoft Windows 2000 Server (SP 4)
 - Microsoft Windows XP Professional (SP 2 or later)
 - Microsoft Win2003 Server (SP 2) Domain Controller and Workgroup
 - Microsoft Windows Vista (SP 1)