



PBXMon Pro

► Overview

PBXMon Pro (PBX Monitor Professional) is a troubleshooting tool that provides:

- > Real-time monitoring of telephony system
- > Comprehensive Extension and Trunk reporting
- > Extensive call logging

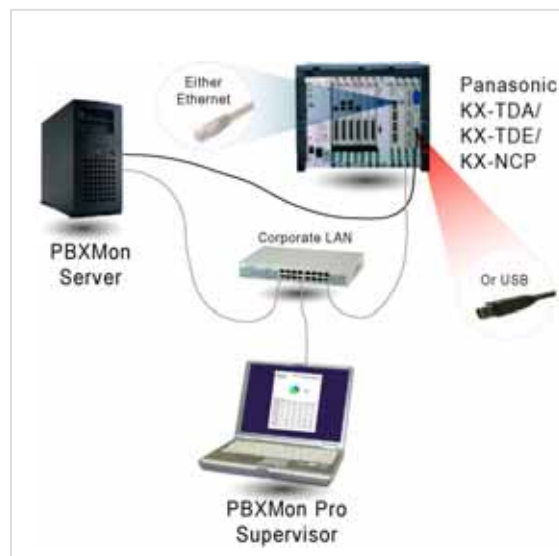
PBXMon Pro inherits and enhances the features of PBXMon Standard product.

► Key Features

- > Real-time extension status monitoring and counter threshold alarms
- > Different colors for each extension status (Idle, Busy, Break, Wrap-up, Logged Out, Out of Service)
- > Detailed Call Logs with full details: time and date, Caller ID, DDI/DID/MSN
- > Filter, print, schedule and export the Call Logs information
- > Custom Extension and Trunk reports
- > View, print, email and export reports
- > CCRRecord Pro ready

► Target Customers

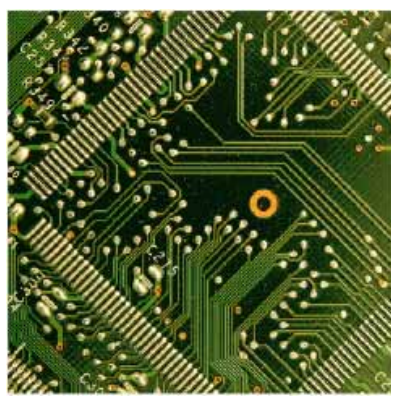
- > Any Dealer technician responsible with telephony solution deployment and maintenance
- > Any IT Manager in charge with monitoring and improving the telephony environment



Benefits

- > Speed up problem detection and help solving problems before users notice and service levels degrade
- > Quick identification of telephony configuration issues
- > Proactive decisions based on real-time system activity
- > Cut Mean-Time-to-Repair and deliver more consistent and reliable telephony environment

System Requirements



- > KX-TDA 30/50/100/200/600, KX-TDE 100/200/600, KX-NCP 500/1000, with USB or TCP/IP connection to CCServer Host
- > CCServer Host (minimum) – P4 2 GHz, 512 MB RAM, 2 GB free HDD space, Network card 100BaseT
- > CCSupervisor Host (minimum) – P3 850 MHz, 256 MB RAM, 400 MB free HDD space, Network card 100BaseT
- > Microsoft Windows 2000 Professional (Service Pack 4 or later), Microsoft Windows 2000 Server (Service Pack 4), Microsoft Windows XP Professional (Service Pack 3), Microsoft Win2003 Server (Service Pack 1 and Service Pack 2) Domain Controller and Workgroup
- > Microsoft Windows Vista (Service Pack 1) supported only for CCSupervisor Host